

# "C" SERIES HANDLE

## Technical Information



**SURE GRIP**  
CONTROLS INC.™

#4 -1413 McGill Road Kamloops BC Canada V2C 6K7  
Ph: 250-374-2278 Fax: 250-374-1099  
[www.suregripcontrols.com](http://www.suregripcontrols.com)

# "C" Series Handle Technical Information

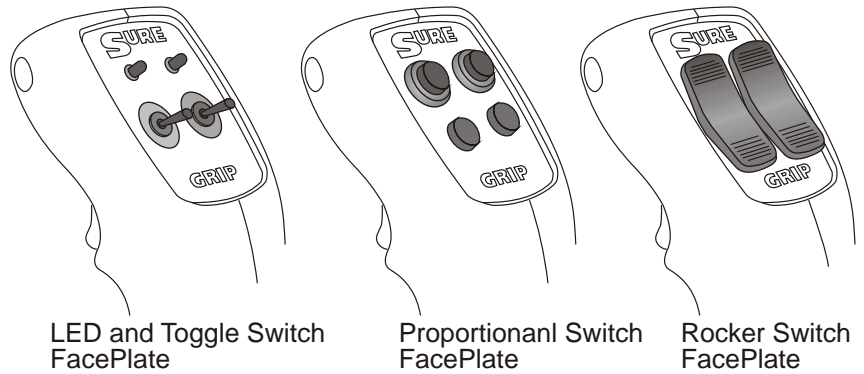
## "C" Series Handle

The "C" Series Industrial Control Grip is our mid sized Compact grip designed to offer 2 or 4 switches in the faceplate as well as the option of a trigger switch or deadman lever.

It is also fully customizable with all the Sure Grip Rocker switches, our Proportional modules, LED's, push on/push off maintained switches and toggle switches. The "C" Series grips can be installed on all of our electronic joysticks.

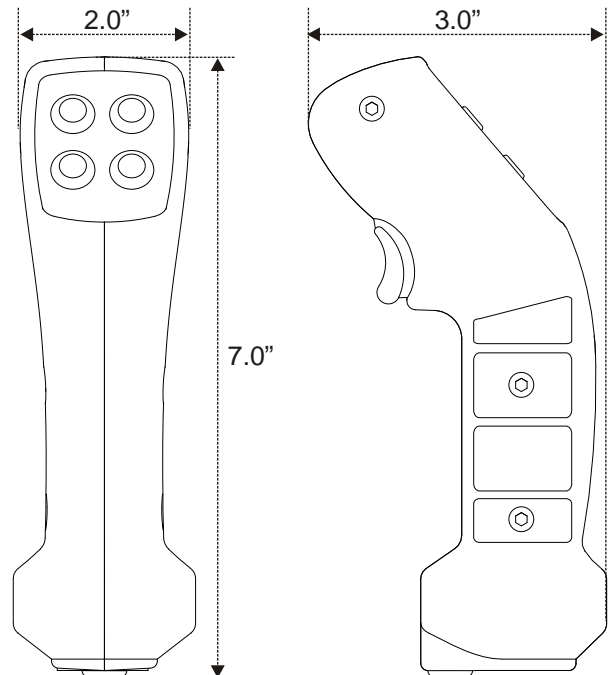
The cases are molded using a super-tough high impact ABS polymer into a comfortable shape for a rugged, light-weight control handle in extreme duty applications. The standard Sure Grip switches are covered with our tough flexible membrane overlay that protects the switches from dirt and moisture.

### Sure Grip Optional Faceplate



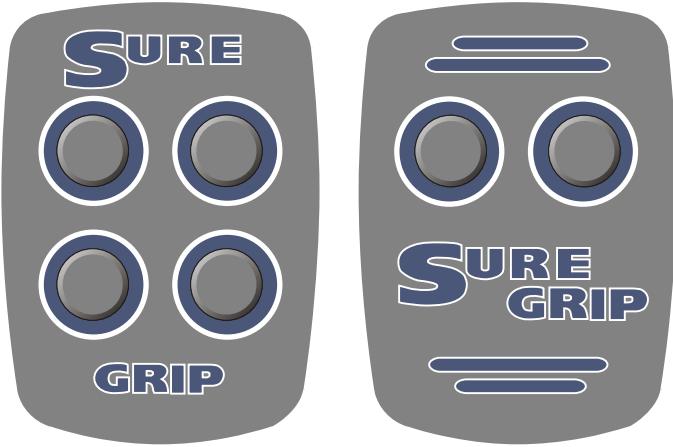
## "C" Handle Specifications

<b>Dimensions:</b>	7" x 3" x 2" wide
<b>Switch Pack:</b>	2 or 4 buttons, 1 or 2 rockers, 4 speed control buttons..... in a wide variety of configurations. Spade terminals on switches.
<b>Trigger:</b>	No trigger, single trigger or variable speed trigger
<b>Weight:</b>	375 grams (9 oz.)
<b>Overlay:</b>	Embossed .007" polyester
<b>Case:</b>	1/8" thick, heavy wall ABS, available in grey or black
<b>Mounting Pin:</b>	1" diameter, 6061 aluminum
<b>Wire:</b>	Standard 10' @ 20 or 22 gauge
<b>Switch Current Rating:</b>	5 amps (Standard silver contact)
<b>Switch Life:</b>	10 million mechanical 2.5 million @ 500 mA DC (typical)



# "C" Series Handle Technical Information

## "C" Handle Faceplate Options

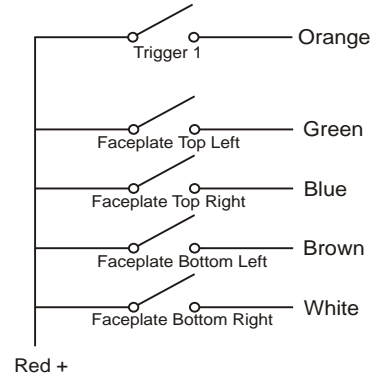


IP67 rated switches optional

**Custom faceplates with your logo, colors and instructions available**

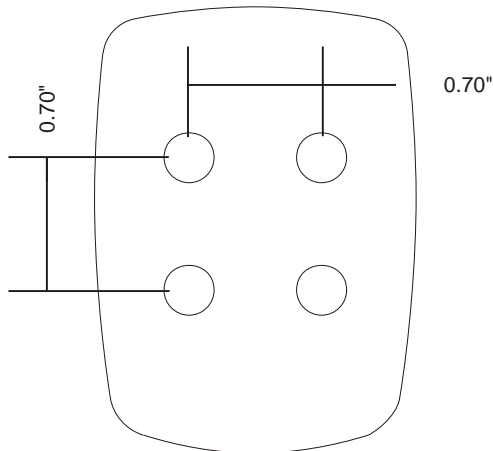
## "C" Handle Typical Wiring

Doc. #420.0081 Rev. 09/12/05

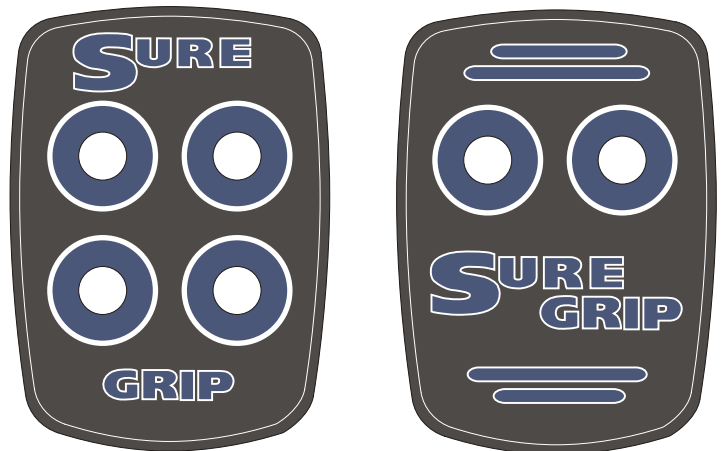


## "C" Handle Faceplate Dimensions

Finished overlay dimensions  
1.665" x 2.315" (.010" smaller than faceplate)



Standard Sure Grip Colors and Switch Layout  
Blue: GY157 (INK Design)  
Pantone 280C shade darker



# "C" Series Handle Technical Information

## "C" Handle Stock Handle Part Number

**C1-M2-10:**

- + Single trigger
- + 2 button momentary
- + 10 feet wire
- + Grey cases

**C1-M4-10:**

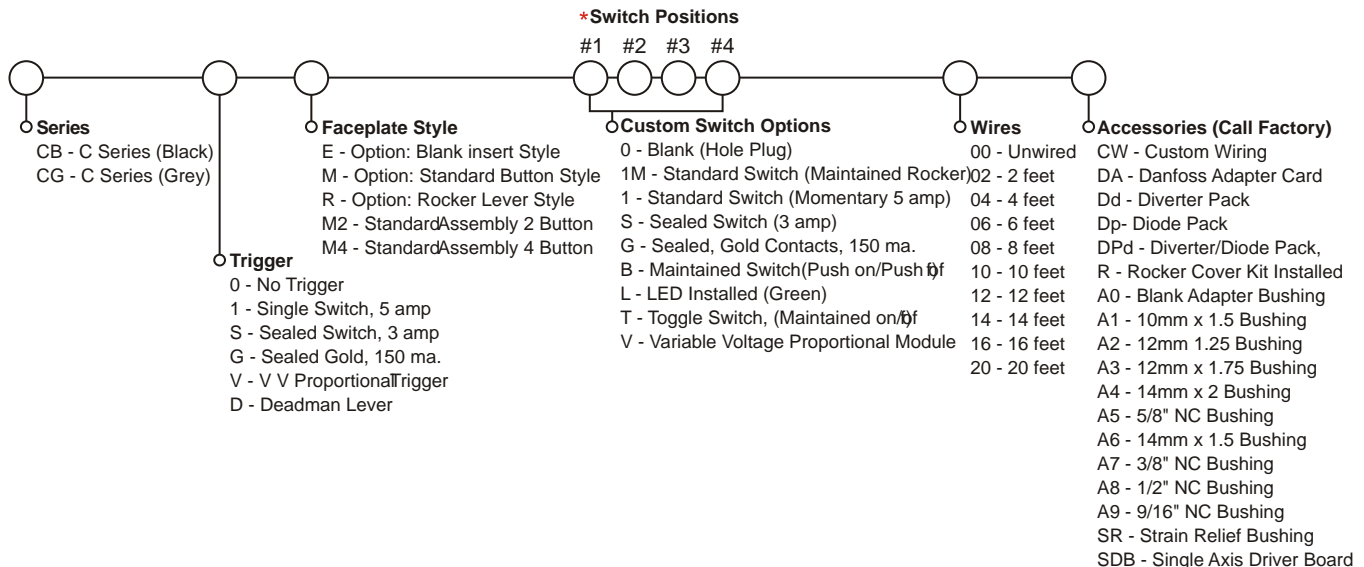
- + Single trigger
- + 4 button momentary
- + 10 feet wire
- + Grey cases

## "C" Handle with "JM/JL" Joysticks

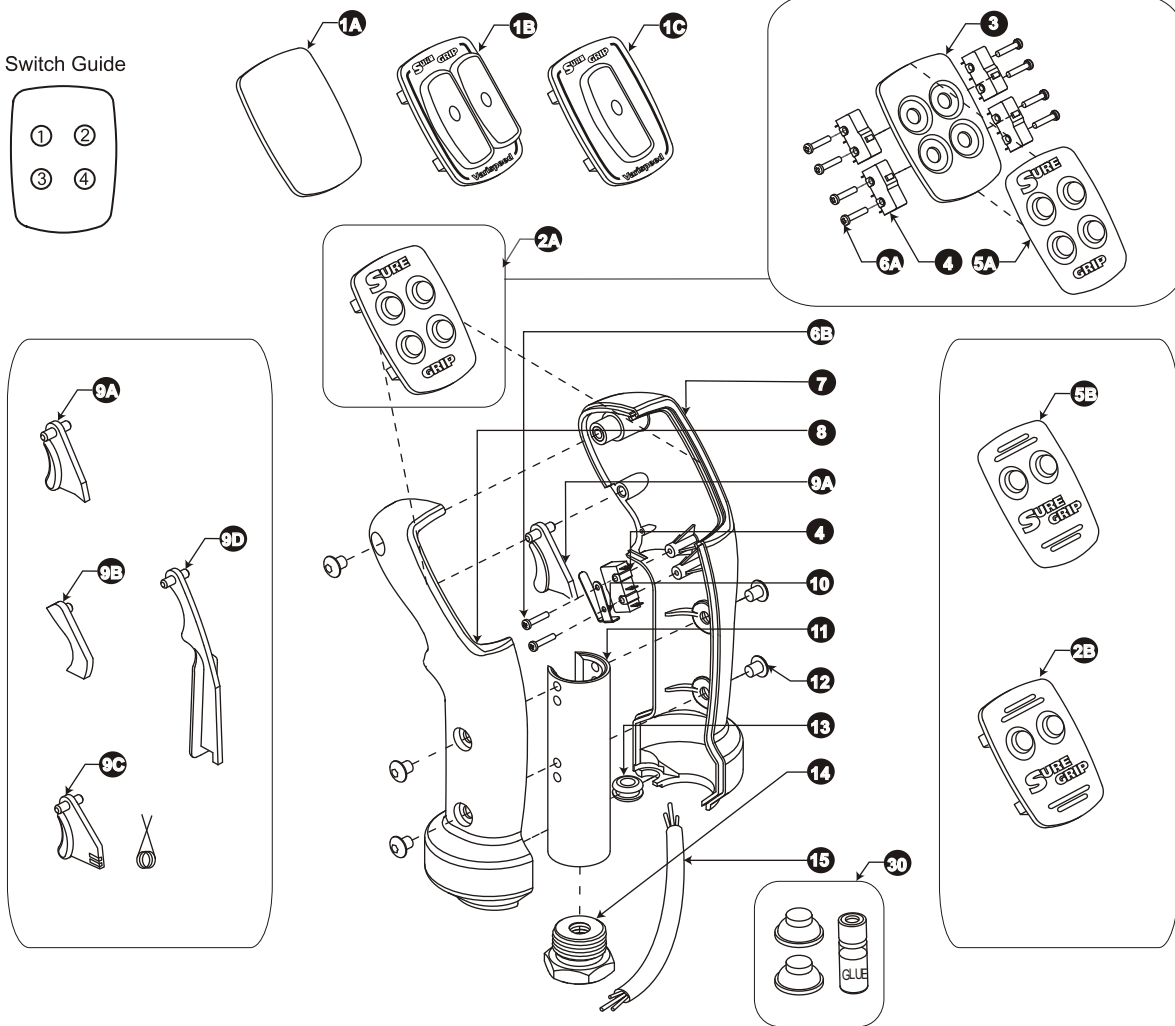


- ① 2 Switch Faceplate
- ② 4 Switch Faceplate
- ③ 2 Proportional +2 standard Button Faceplate
- ④ "C" Handle with our "JM" and "JL" joystick

## "C" Handle Customer Order Guide



# "C" Series Handle Technical Information



FLG	PART#	DESCRIPTION	FLG	PART#	DESCRIPTION
1A	C-FP-00	"C" Blank Faceplate	12	SC-02SS	10-32 x 3/8" Capscrew - Button Head
1B	C-FP-R-??	"C" Series Dual Rocker (Call Factory)	13	GR-01	3/8" x 1/4" Grommet
1C	C-FP-R-??	"C" Series Single Rocker (Call Factory)	14	BU-00	Adapter Bushing - 1/4" Hole ( See Page 15 )
2A	C-FP-A4	"C" Series 4 Button FaceplateAssy.	15	C1-M2-W	"C" Handle 2 Button Faceplate Wire Harness
2B	C-FP-A2	"C" Series 2 Button FaceplateAssy.		C1-M4-W	"C" Handle 4 Button Faceplate Wire Harness
3	C-FP-01	"C" Series Empty Faceplate	30	FB-VV-A	Flex Button Repair Kit: 2 VV/V2 Modules
4	SW-00	Handle Switch, L/S			
5A	C-ME-A4	"C" Series 4 Button Overlay			
5B	C-ME-A2	"C" Series 2 Button Overlay			
6A	SC-03	2 x 7/16" Tapping Screw - Pan Head (Faceplate)			
6B	SC-21	2 x 9/16" Tapping Screw - Pan Head (Trigger)			
7	C-HL-02-G	"C" Series Handle Case Right - Grey (Black)			
8	C-HL-01-G	"C" Series Handle Case Left - Grey (Black)			
9A	C-TR-01	"C" Series Single Trigger			
9B	C-TR-00	Trigger Insert			
9C	TR-P1-A	Proportional Trigger/Spring Assy.			
9D	TR-D1-G	Deadman Trigger Lever - Grey (Black)			
10	LS-00	Leaf Spring for Trigger			
11	PN-03	Mounting Pin "L/S"			